

# BKG UNDER-BAR

*Service Lift*

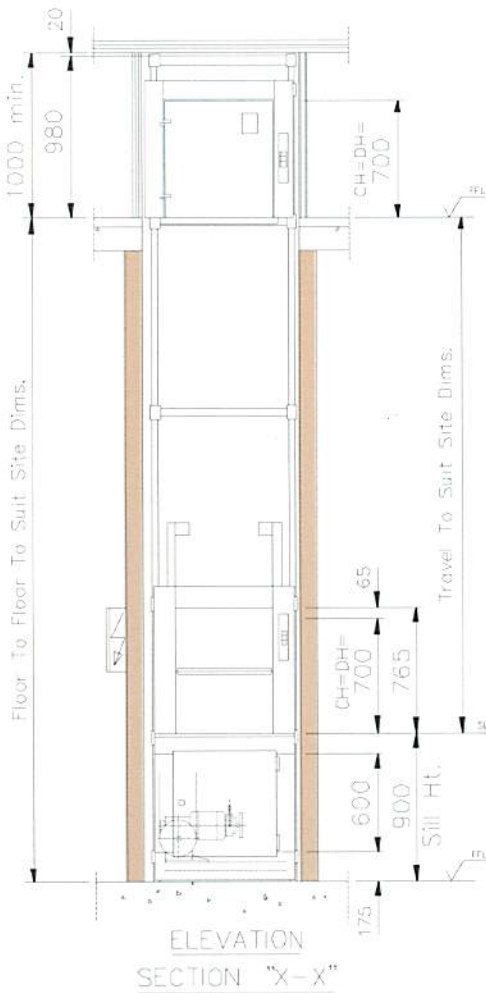


**SHORTS  
LIFTS**

*Suppliers of High Quality Lifts and Lift Components  
to the UK Lift Industry*



## UNDER-BAR SERVICE LIFT STANDARD SPECIFICATION



### CAPACITY

100kg

### SPEED

0.45 m/s

### DRIVE SYSTEM

Chain & Sprocket W/Unit at base on electrical supply of 400 Volts, 3 Phase, 50 Hertz (with Neutral)

### TRAVEL

2/3 stops, with variable travel

### ARRANGEMENT

Single or Through Entry

### STRUCTURE

Galvanised steel structure  
Polyurethane buffers

### CAR

Size - 600W x 500D x 700H  
Finished - Primed Walls with Floor/Shelf in Stainless Steel

### LANDING DOORS

Bi-parting/Hinged at top floor  
Finished Primed

### MACHINE ROOM DOOR

Finished Primed

### CONTROL SYSTEM

Microprocessor controller within lockable cubicle positioned outside lift shaft at lowest level

### ELECTRICAL

Pit Stop Switch  
Additional auxiliary main contactor  
Phase Failure Reversal Relay  
Position Indicators  
Lift In Use Indicators  
Lift Arrival Buzzer  
Door Open Alarm Buzzer  
Anti Quick-reversal  
Overtravel timer  
Hand Lamp  
Light/Socket within Machine Room  
Wiring in Loom Form

### GENERAL

Full Set of Warning Notices  
User Manual  
Comprehensive Installer Instructions  
Layout Drawings & Wiring Diagrams  
Compliance with BS5655 Part 3  
Compliance with European Machinery Regulations  
Carries the European 'CE' Mark.

## OPTIONAL FEATURES

Stainless Steel finish to car/landings/machine door

Fire rated landings/machine door

Diagonal drop bar protection to car entrance with electrical contact(must be fitted on through entry lifts to comply with regulations)

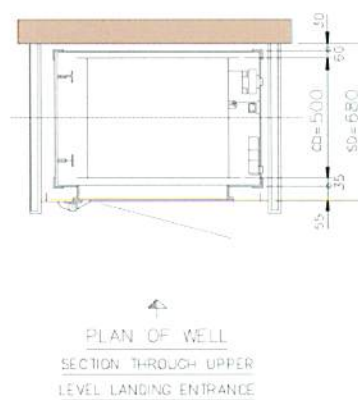
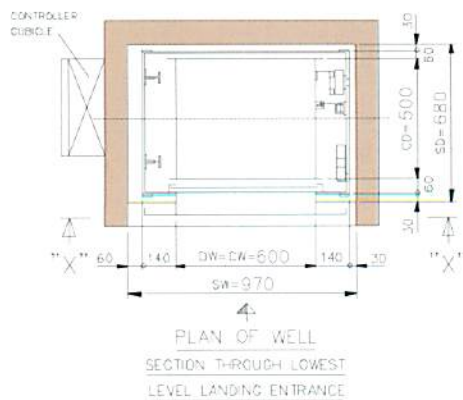
Operation on electrical supply 240 volts, 1 phase, 50 hertz(capacity reduced to 50kg)

Shaft cladding in a choice of primed steel, stainless steel, galvanised steel, plastic coated steel panels

Other non-standard car sizes available on request

Load guard baffles

PLEASE NOTE! THE UNDERCOUNTER HOIST IS ALSO AVAILABLE WITH A THROUGH ENTRY CONFIGURATION



## ASCENSION LIFTS

Ascension Lifts Ltd., Unit 22, Western Parkway Business Centre,  
Lower Ballymount Road, Dublin 12, Ireland  
Tel: 353-1-4050050 Email: info@ascensionlifts.com  
www.ascensionlifts.com



## SHORTS LIFTS

PO Box 258  
Bradford BD2 1QR  
Tel: 01274 305066  
Fax: 01274 736212  
e-mail: info@shorts-lifts.co.uk  
web site: www.shorts-lifts.co.uk



Under our policy of continuing development, Shorts Lifts reserve the right to alter the dimensions or specification of any equipment illustrated or described in this brochure without prior notice. The details contained in this brochure do not constitute an offer.